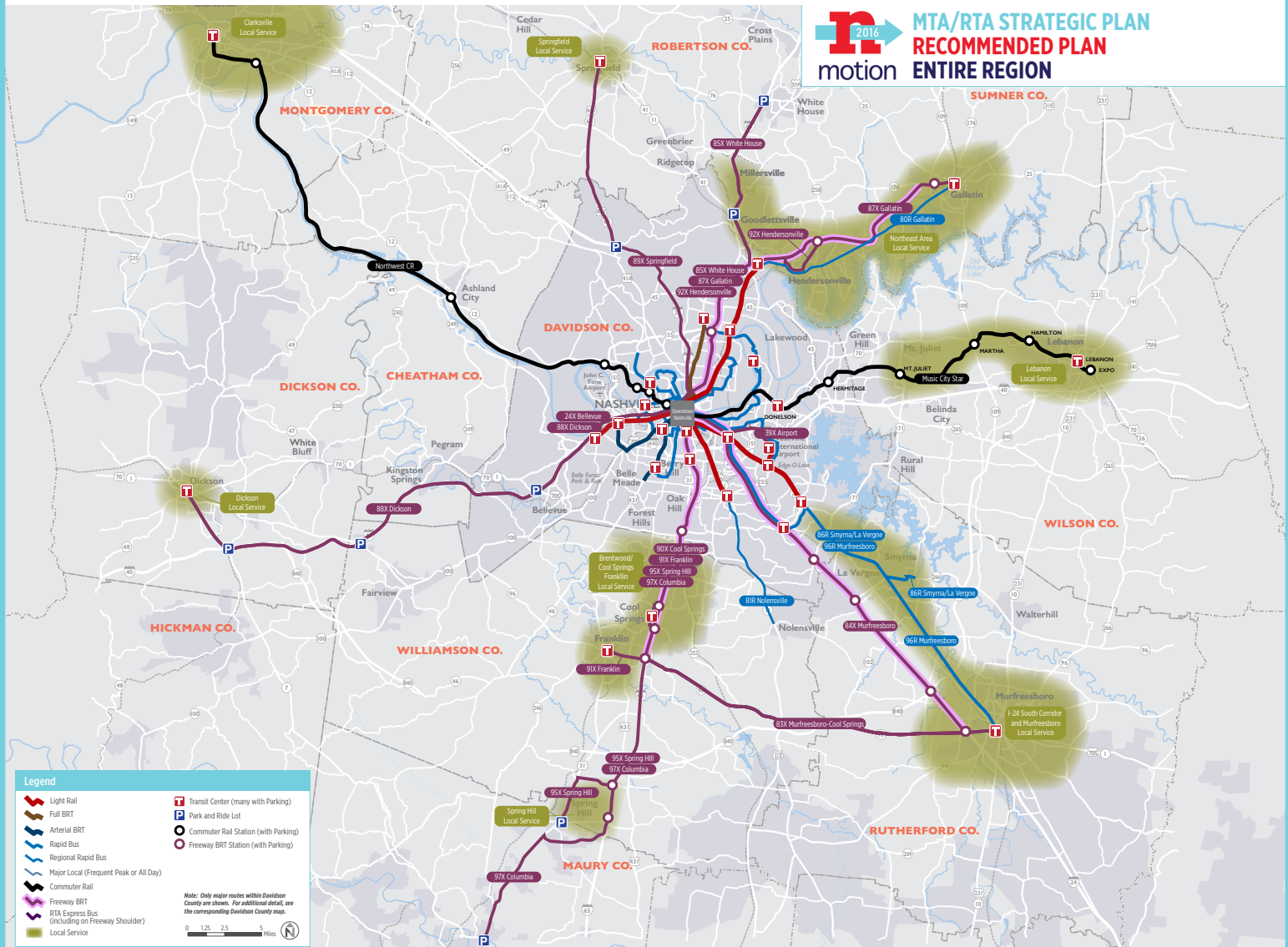




Frequent | Dependable | Regional Transit Plan



nMotion is the Nashville Metropolitan Transit Authority and the Regional Transportation Authority of Middle Tennessee's 25-year strategic plan. Since the nMotion planning process launched in April 2015, we've released more than 35 technical documents and studies for public comment, hosted more than 25 public meetings, spoken with over 80 civic organizations, and carefully considered more than 18,000 survey responses and comments. What we've heard is that Middle Tennesseans want a robust mass transit system that provides expanded travel options and one that will keep our region economically competitive in the future, expand opportunities for all Middle Tennesseans, and help to sustain the high quality of life we enjoy today.

Beyond public engagement, we've conducted market analyses, current system assessments and peer city reviews that provide a strong base for short-term enhancements, and a framework for long-term improvement.

A Comprehensive Regional Transit System

Population

TODAY

1.6 million

2040

3.1 million

Weekday Ridership

TODAY

34,000

2040

180,000

Miles of Pedestrian Improvements

200+

Additional Dedicated Park-and-Rides

25

MTA Routes That Will be Frequent (every 15 minutes or better)

TODAY

20%

2040

41%

Technology

Real-time information expansion to AccessRide and RTA services, Open Payment Systems that simplify fare payment, etc.

Number of Neighborhood and Regional Transit Centers

20+



A High-Capacity Transit Network

46 miles of light rail

83 miles of commuter rail

98 miles of freeway bus rapid transit

82 miles of arterial bus rapid transit/rapid bus

150 miles of express bus-on-shoulder

AccessRide Improvements

Expansion and improvements to the AccessRide door-to-door service



Benefits and Costs

RESIDENTS SERVED

DAVIDSON COUNTY

TODAY

230,000

2040

391,000 (+70%)

MIDDLE TENNESSEE

(within half mile of local service and 5 miles of major stations)

TODAY

916,000

2040

2.2 million (+140%)

JOBS SERVED

DAVIDSON COUNTY

TODAY

356,000

2040

744,000 (+110%)

MIDDLE TENNESSEE

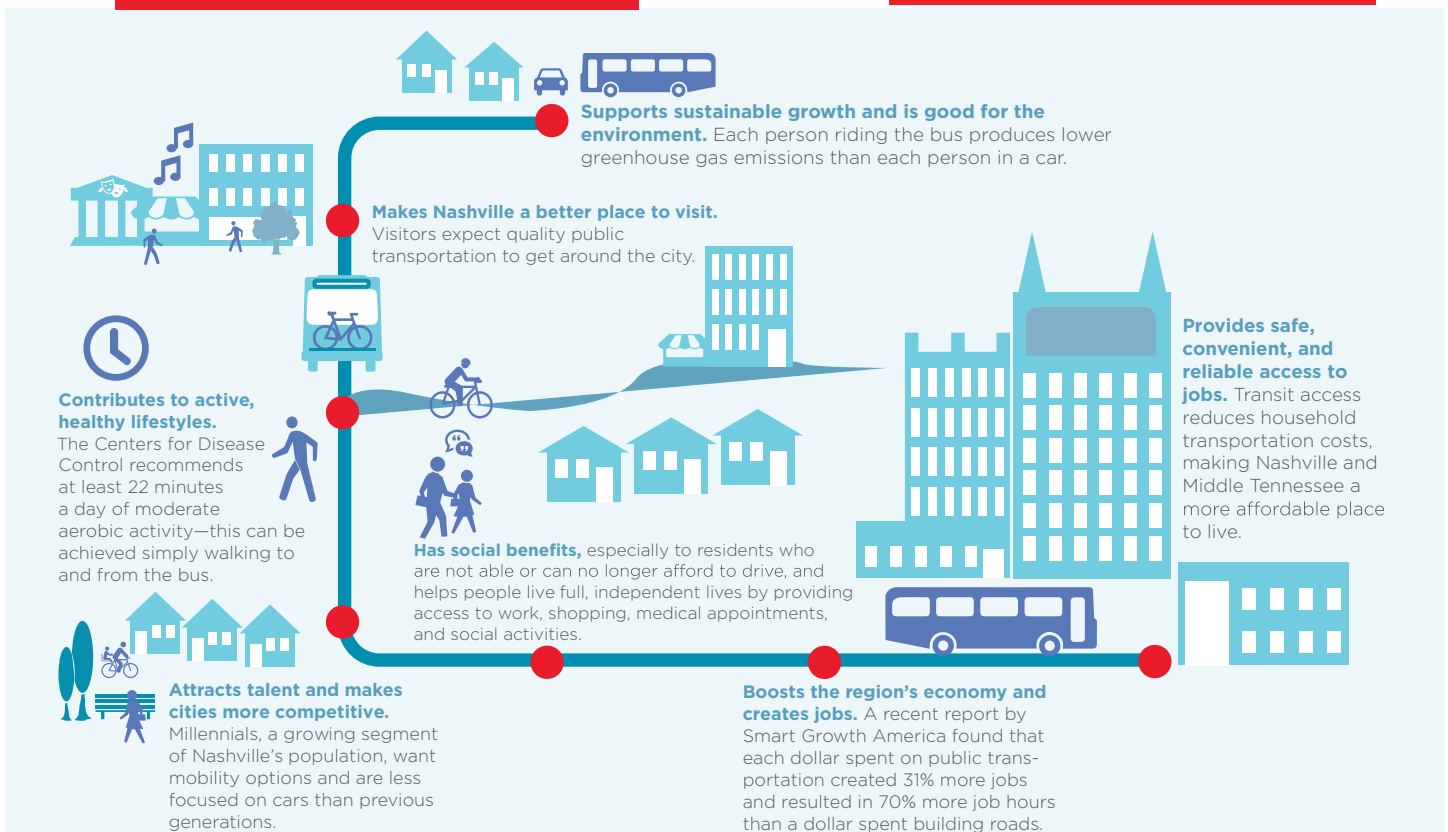
(within half mile of local service and 5 miles of major stations)

TODAY

456,000

2040

1.5 million (+222%)



COSTS



Capital Budget

Today through 2040

\$5.9 billion

Annual Operating Budget

TODAY

\$83 million

2040

\$338 million

Annual Cost per Person

TODAY

\$67

2040

\$244

Timeline

5
years

In the next five years: Lay the groundwork

Better bus service that means shorter wait times between buses

Extended service hours – earlier and later, with fewer transfers

Better bus stops and new transit centers

Simpler ways to pay your fare

Seamless connections to other transportation providers

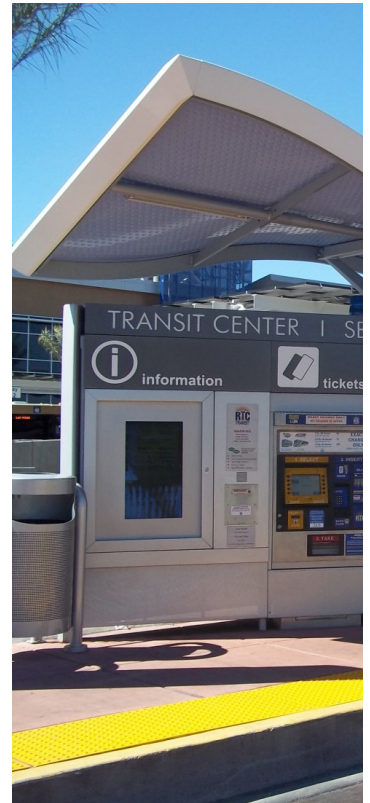
Expanded and improved AccessRide services

Streamlined service through Downtown Nashville to improve reliability and expand neighborhood and regional connections

Improved pedestrian connections will appear in more and more corridors to improve access to an expanded mass transit system.

Improvements in regional travel corridors such as bus-on-shoulder services, expanded park-and-ride options, additional express trips, and improvements to the Music City Star

Exploration of opportunities for future development of rapid transit services such as new commuter rail lines, light rail, freeway and arterial bus rapid transit in key corridors through expanded cooperation with the Tennessee Department of Transportation and local communities, and public-private partnerships



15
years

In the next 15 years: An improved regional network

Service will continue to improve as more riders take advantage of a more convenient system.

Dedicated transit lanes will begin to appear in key corridors to improve both speed of service and overall dependability.

Design will advance, and construction will begin on initial rapid transit projects, with completion of initial segments toward the end of this period.

Downtown Nashville will have “transit priority corridors” with enhanced passenger and pedestrian amenities, and quick/reliable operation through Downtown.



25
years

In the next 25 years: A fully integrated system

Rapid transit (bus rapid transit, light rail and commuter rail) operations will commence in more local and regional corridors.

Robust bus service in additional neighborhoods will join with new rapid transit options, private transportation providers, and expanded sidewalks, bikeways, and greenways to form a seamless travel experience for residents and visitors.



www.nmotion2016.org

#nMotion2016



@NMotion



@NMotion2016